

One little box.



The core of an entire ecosystem of products.

What is it?

RoomReady Go may *look* like a simple little box but it's actually the brains of your entire room, anticipating what you need. Walk in and the room automatically wakes up, turning on the lights and the display. Leave the room and it automatically resets so the next person in the room isn't blown away by the volume you used for that funny video during your meeting. When the technology is this intuitive, you can focus on a flawless presentation.

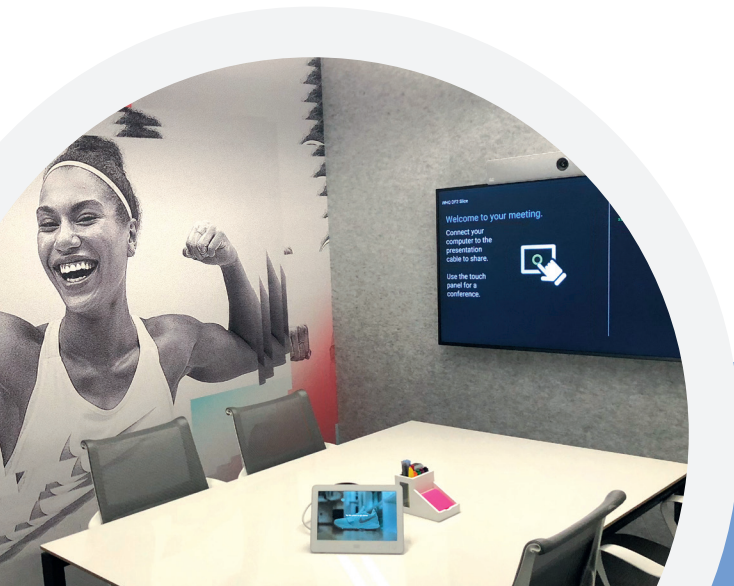
Why was it created?

RoomReady believes that technology should be intuitive and it should be affordable. AV control systems are notoriously complex, and that complexity costs money.

Technology is also known for becoming obsolete fast. Other AV systems are at their best on the first day — RoomReady Go is always updated, ensuring every day is the best day.

How does it work?

In tech speak, the RoomReady Go uses 'a proprietary learning algorithm to make intuitive decisions that can be tailored over time.' But what you really care about is that from the moment you enter, the RoomReady Go anticipates your needs and makes them happen without you needing to fuss with anything. No fumbling to connect video while everyone watches, no searching for PIN numbers for a conference call. And when you leave, the system resets, ready for the next user. Plus, firmware updates happen remotely, so every RoomReady room is consistently up-to-date and ready for service.



room-ready

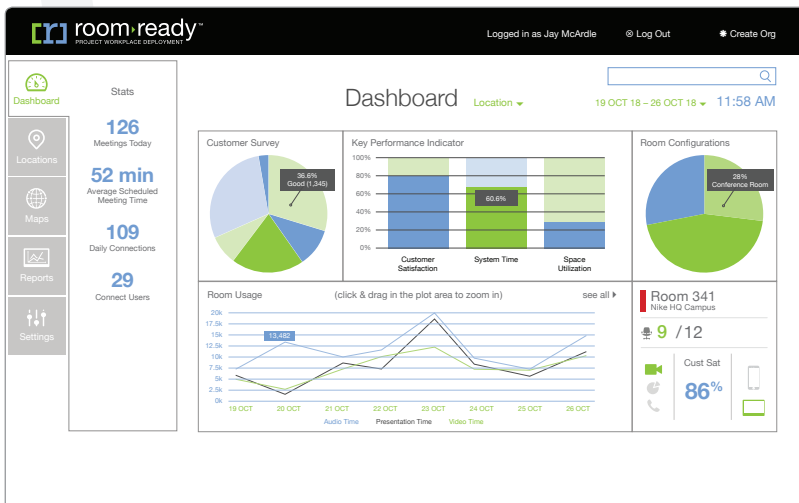


Meeting tech so easy and helpful you can't imagine a meeting without it.

The RoomReady Ecosystem

RoomReady Connect

is a simple app for your iPhone that allows you to control the room's technology. Because your phone already contains your contacts, calendars and WebEx access codes, you can now use your own familiar device to control any RoomReady space. Available free from the App Store.



RoomReady View is a web-based portal that allows your tech support team to do their work from wherever they are. The dashboard provides insight for all rooms, from high-level analytics, to room-specific details about usage and performance.

RoomReady Set

is a patented enclosure that houses the tech equipment neatly behind the mounted displays. Beyond its good looks, the RoomReady Set saves you time and money with easier construction and faster installation.

